

**SUSTAINABILITY IS OUR BUSINESS**



**Chalo  
Chesu.**

**Environmental Consulting Limited**

**Company Profile**

# Contents Page

<b>Company Summary</b>	<b>03</b>
<b>Mission and Vision</b>	<b>04</b>
<b>Services</b>	<b>05</b>
<b>Legal Compliance Documentation</b>	<b>07</b>
<b>Company Structure and Governance</b>	<b>08</b>
<b>Contact Us</b>	<b>10</b>



**SUSTAINABILITY IS OUR BUSINESS**

## About Our Company

Chalo Chesu Environmental Consulting Limited is a firm dedicated to promoting sustainable management of natural resources in Zambia and across Africa. Established from the conviction that more, must be done to safeguard the quality and quantity of our Natural Resources, Chalo Chesu addresses the pressing challenges of resource mismanagement, degradation, and limited community benefits common in the Global South.

We provide innovative products and services that reduce environmental impact, strengthen value chain processes, and enhance stakeholder engagement. Our goal is to deliver measurable environmental, financial, and social benefits, empowering institutions, businesses, and communities to thrive while preserving ecosystems for future generations.





## Our Mission

Our mission as an Environmental Consulting firm is to offer solutions that foster the sustainable Management of Natural Resources.

## Our Vision

To be the vanguard of Sustainable Resource Management, leveraging cutting-edge technology and visionary strategies to forge a future where humanity and nature thrive in perfect harmony.

Our logo represents giving back to the earth and the community from which we grow so many things that create value. It's concept puts together the elements of a flower pot, and a growing plant, that represents "putting back".



# Our Services

## Environmental Services

- 🌱 Environmental Impact Assessments.
- 🌱 Environmental Project Brief.
- 🌱 Environmental Compliance and Auditing.
- 🌱 Water, Soil and Air Monitoring and Testing.
- 🌱 Flora and Fauna Assessments.



## Geology Services

- 📍 Geotechnical Investigations (SPT, CBR, BCP).
- 📍 Resources Assessments.
- 📍 Geological Mapping and Surveying.

## Rural Development Services

- 🌱 Post Harvest Management Services.
- 🌱 Project Management.
- 🌱 Rural Development.
- 🌱 Climate Smart Practices.
- 🌱 Supply and Installation of irrigation systems.





# Our Services



## Energy Services

- ☙ Energy Audits.
- ☙ Supply and installation of( Solar Panels, Inverters and Batteries).
- ☙ Clean Cooking(Bio- Briquettes, Biogas).

## Waste Management

- ☙ Waste Collection and Management.
- ☙ Remediation Activities.



## Surface Protection Services

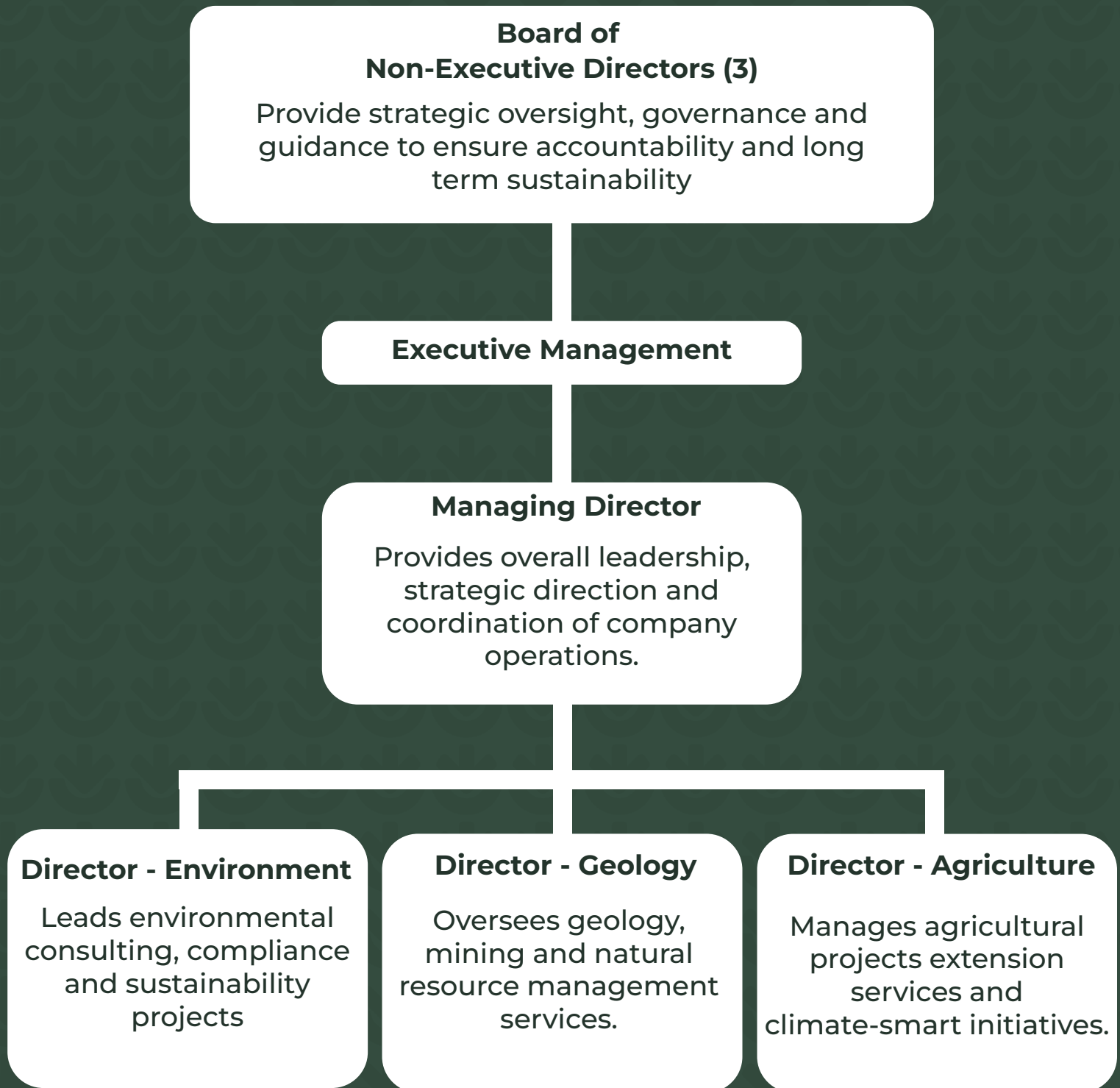
- ☙ Supply and installation of 1.0 mm and 1.5 mm High Density Polyethylene geomembrane liners.

# Legal Compliance Documentation

Chalo Chesu operates under valid licenses and in strict compliance with all relevant statutory bodies.



# Organization and Management





## Get In Touch With Us



+260 971 946708 | +260 963 465956



Chalo Chesu



Chalo Chesu



chesuchalo@gmail.com



**Chalo  
Chesu.**

Environmental Consulting Limited



# Chalo Chesu.

## PLOT: 2924, MEANWOOD NDEKE LUSAKA, ZAMBIA

### Project Portfolio

We specialize in comprehensive environmental consulting services, ensuring regulatory compliance and promoting sustainable development.

Our team has a proven track record in delivering high-quality Environmental Project Briefs (EPBs) and Environmental Impact Assessments (EIAs) for various projects, including:

- Environmental impact assessments (EIAs)
- Environmental project briefs (EPBs)
- Baseline Studies
- Sustainability Reporting
- Environmental management plans
- Feasibility Studies

PROJECT NATURE	NARRATION	LOCATION
Surface Protection	HDPE Lining 600,000m <sup>2</sup> Tailing Dam	Lubumbashi DRC
Surface Protection	HDPE Lining 280,000m <sup>2</sup> Tailing Dam	Kolwezi DRC
Environmental Due Diligence	Safari Camp	Lower Zambezi NP-Chirundu
Environmental Project Brief	Pyrolysis Processing Plant	Lusaka
Environmental Project Brief	Waste Tyre Recycling Plant	Lusaka
Environmental Project Brief	Block Making Factory	Chibombo
Environmental Project Brief	Service Station	Kazungula District
Environmental Impact Assessment	Large Scale Mining	Vubwi



Chalo Chesu supports the Sustainable Development Goals



# ZAMBIA ENVIRONMENTAL MANAGEMENT AGENCY

## Head Office

Corner of Church & Suez Roads  
P.O Box 35131  
Lusaka, Zambia  
Tel: +260-211-254023/254059

All Correspondence to be addressed to  
The Director General



[info@zema.org.zm](mailto:info@zema.org.zm)



[www.zema.org.zm](http://www.zema.org.zm)

*In reply please quote*

**ZEMA/INS/101/04/1**

No:

October 3, 2025

The Director  
Chalo Chesu Environmental Consulting Limited  
Plot 2924, Meanwood Ndeke  
**LUSAKA.**

**Mobile Cell No:** +260 971 946708/ +260 963 465956

**Email Address:** chesuchalo@gmail.com

Dear Sir,

**RE: EXPRESSION OF INTEREST TO BE INCLUDED ON THE LIST OF ENVIRONMENTAL CONSULTANTS**

The subject matter refers.

The Zambia Environmental Management Agency (ZEMA) acknowledges receipt of your letter in which you were expressing interest to be included on the list of Environmental Consultants.

ZEMA has since reviewed your application and has **No Objection** with you being added to the List of Environmental Consultants. The list has since been updated to include your company. Consequently, we would like to advise you to conduct your business professionally and in accordance with legal requirements.

Please do not hesitate to contact the undersigned should you have any issues that you may wish to clarify.

Yours faithfully,

Constantino Mwembela

Acting Director Licensing and Compliance Services

For/Director General

**ZAMBIA ENVIRONMENTAL MANAGEMENT AGENCY**

**Northern Regional Office**

P.O Box 71302  
Tel: +260-212-621048/610407

**Solwezi**

P.O Box 110134  
Tel: +260-218-871555

**Livingstone**

P.O Box 60195

**Chipata**

P.O Box 510527  
Tel: +260-211-515264

**Chirundu**

P.O Box CRU 31 Chirundu  
Tel: +260-211-515261